

Care and Maintenance of Trees and Shrubs at La Quinta in Barkley Ranch Estates

Landscape Committee Members:

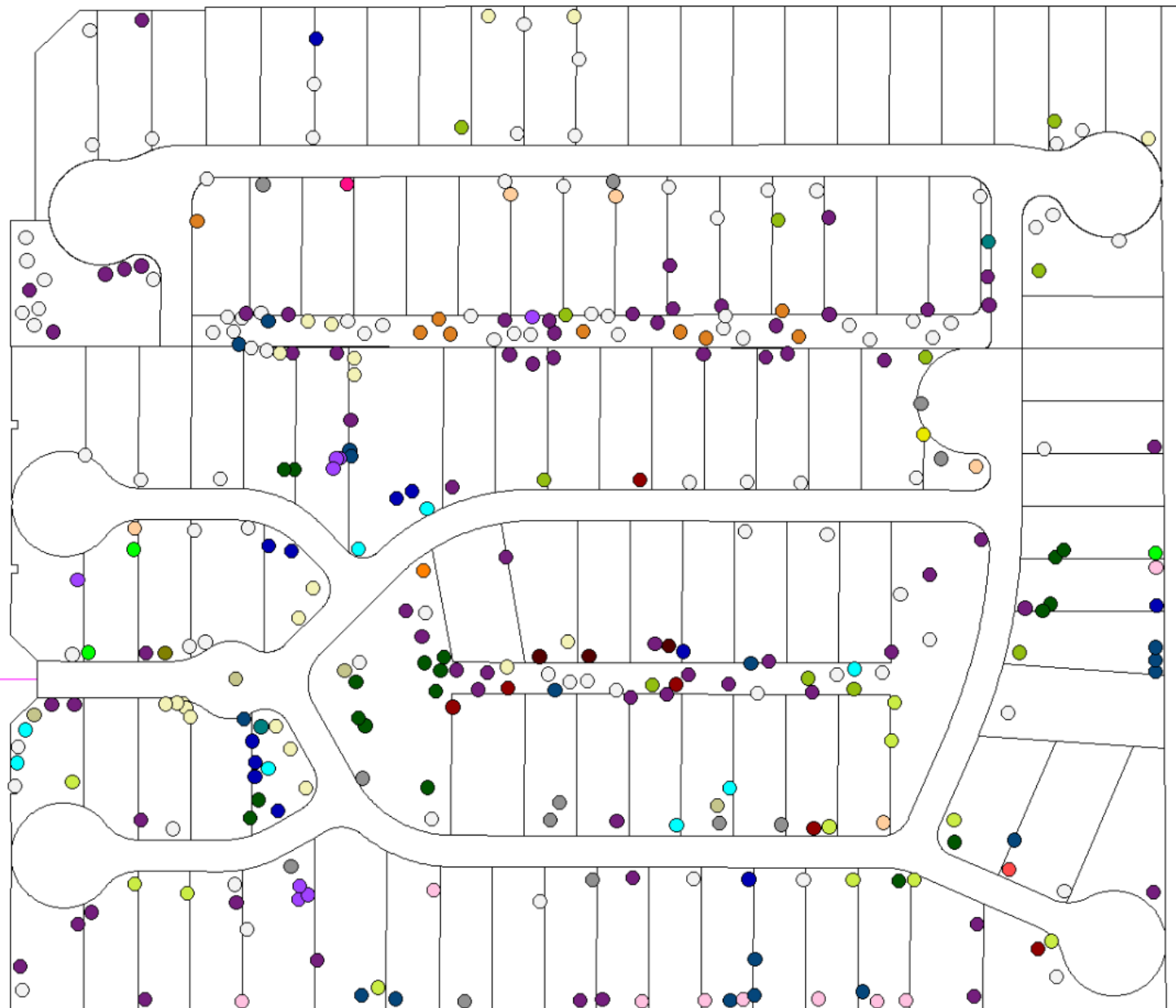
- Dan & Jacque Hann
- Davie Brooks
- Mark DeAnda
- Louis Didier
- Barbara Dewitt
- Kurt Nolte



Trees

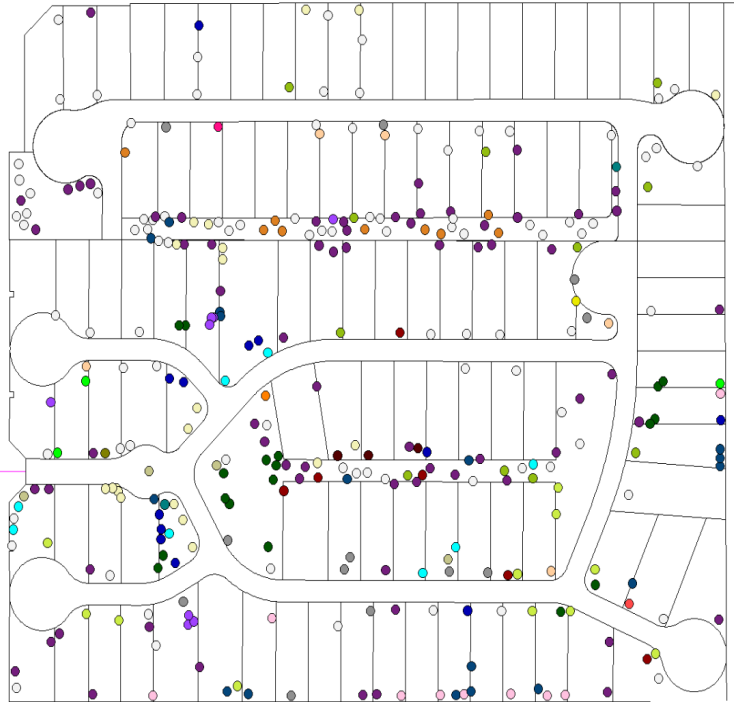
La Quinta

Spring, 2013 La Quinta Tree Inventory



Palo Verde (other)	0 pts.
Tipu Tree	11 pts.
Coolibah	0 pts.
Red Gum Acacia	9 pts.
Silk Tree Mimosa	1 pts.
Date/Pigny Palm	4 pts.
Ironwood	3 pts.
Palo Brea	1 pts.
Other Acacia	6 pts.
Palo Blanco	1 pts.
Bottle Brush Tree	3 pts.
Fan Palm	18 pts.
Chilian Mesquite	8 pts.
Honey Mesquite	2 pts.
Arizona Yellow Bells	12 pts.
Bottle Tree	20 pts.
Olive	1 pts.
Citrus	17 pts.
Shoestring Acacia	13 pts.
Queen Palm	8 pts.
TBA	11 pts.
Sweet Acacia	9 pts.
Willow Acacia	68 pts.
Texas Ebony	5 pts.
Jacaranda	12 pts.
Orchid	1 pts.
Sissoo	93 pts.

Spring, 2013 La Quinta Tree Inventory



Grey square	Palo Verde (other)	0 pts.
Light green square	Tipu Tree	11 pts.
Teal square	Coolibah	0 pts.
Pink square	Red Gum Acacia	9 pts.
Red square	Silk Tree Mimosa	1 pts.
Light brown square	Date/Pigmy Palm	4 pts.
Dark brown square	Ironwood	3 pts.
Orange square	Palo Brea	1 pts.
Dark red square	Other Acacia	6 pts.
Olive green square	Palo Blanco	1 pts.
Bright green square	Bottle Brush Tree	3 pts.
Dark green square	Fan Palm	18 pts.
Cyan square	Chilian Mesquite	8 pts.
Teal square	Honey Mesquite	2 pts.
Blue square	Arizona Yellow Bells	12 pts.
Yellow square	Bottle Tree	20 pts.
Pink square	Olive	1 pts.
Dark blue square	Citrus	17 pts.
Black square	Shoestring Acacia	13 pts.
Purple square	Queen Palm	8 pts.
Light green square	TBA	11 pts.
Orange square	Sweet Acacia	9 pts.
Purple square	Willow Acacia	68 pts.
Light orange square	Texas Ebony	5 pts.
Grey square	Jacaranda	12 pts.
Yellow square	Orchid	1 pts.
White square	Sissoo	93 pts.

Tree selection to improve aesthetics and safety

Sissoo Tree





**Sissoo Tree:
No longer recommended**

Pruning to Reduce Wind Damage

Studies have shown that pruning reduces the angle of trunk bend when trees are exposed to high winds



Not pruned



THE BLUFFS



Reduce Structural Issues that Cause Tree Failure



Reduce Structural Issues that Cause Tree Failure

- **Codominant Branching:**
Stems of equal size originating from the same point on the tree
- **Included Bark:**
Bark pinched between two branches, leading cause of weak branch unions
- **Unbalanced Canopy:**
One side much heavier, or most weight at the tips of branches

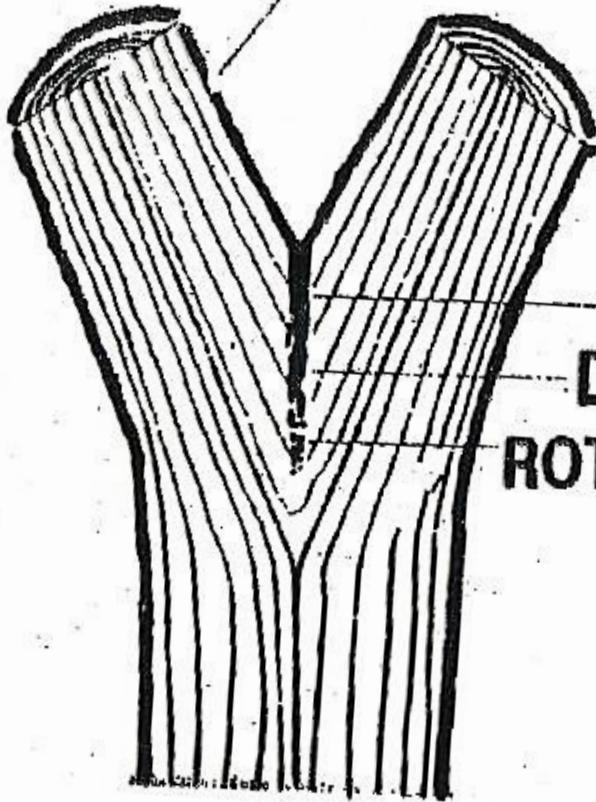


Reduce Structural Issues that Cause Tree Failure

- **Codominant Branching:**
Stems of equal size originating from the same point on the tree
- **Included Bark:**
Bark pinched between two branches, leading cause to weak branch unions
- **Unbalanced Canopy:**
One side much heavier, or most weight at the tips of branches



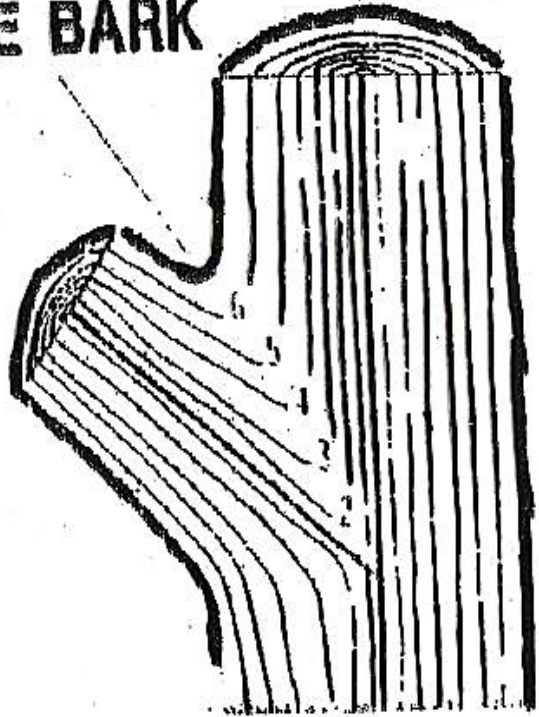
CAMBIUM



LIVE
DEAD BAR
ROTTEN

**WEAK CROTCH
WITH BARK INCLUSION**

LIVE BARK



STRONG CROTCH



**Weak structure:
Codominant Branches
and Bark Inclusions**













Codominant Branching Often Causes Branch Failure in Wind Storms









Bark Inclusion Results From Codominant Branching Causing Weak Branch Unions



Failure Due to Bark Inclusion









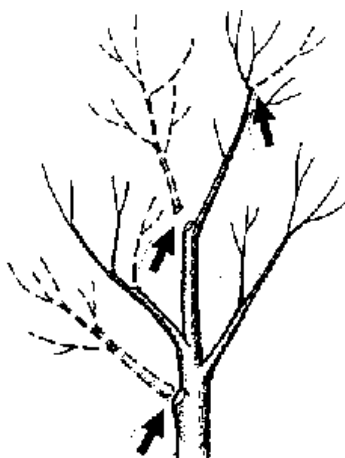
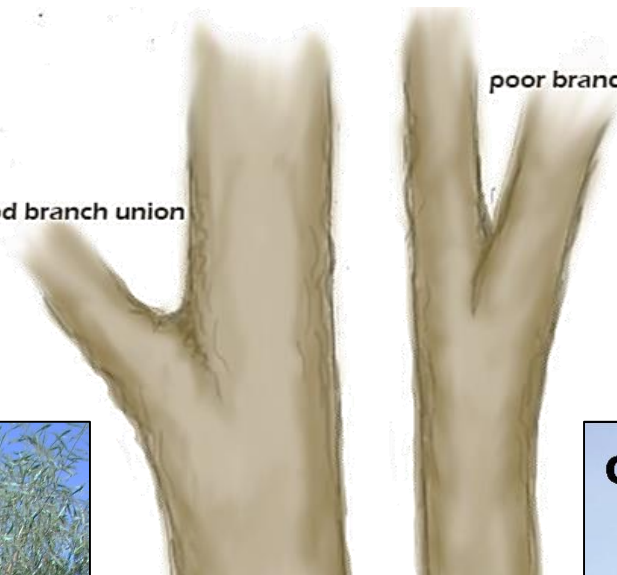






good branch union

poor branch union



**Co-dominant
Leaders**



Reduce Structural Issues that Cause Tree Failure

- **Codominant Branching:**
Stems of equal size originating from the same point on the tree
- **Included Bark:**
Bark pinched between two branches, leading cause of weak branch unions
- **Unbalanced Canopy:**
One side much heavier, or most weight at the tips of branches





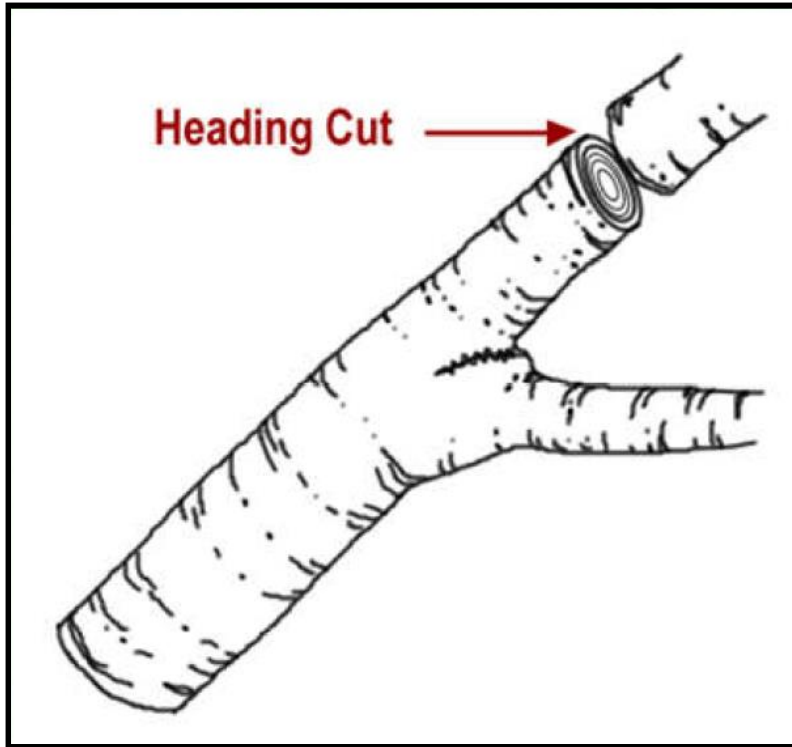
60

WAL 245



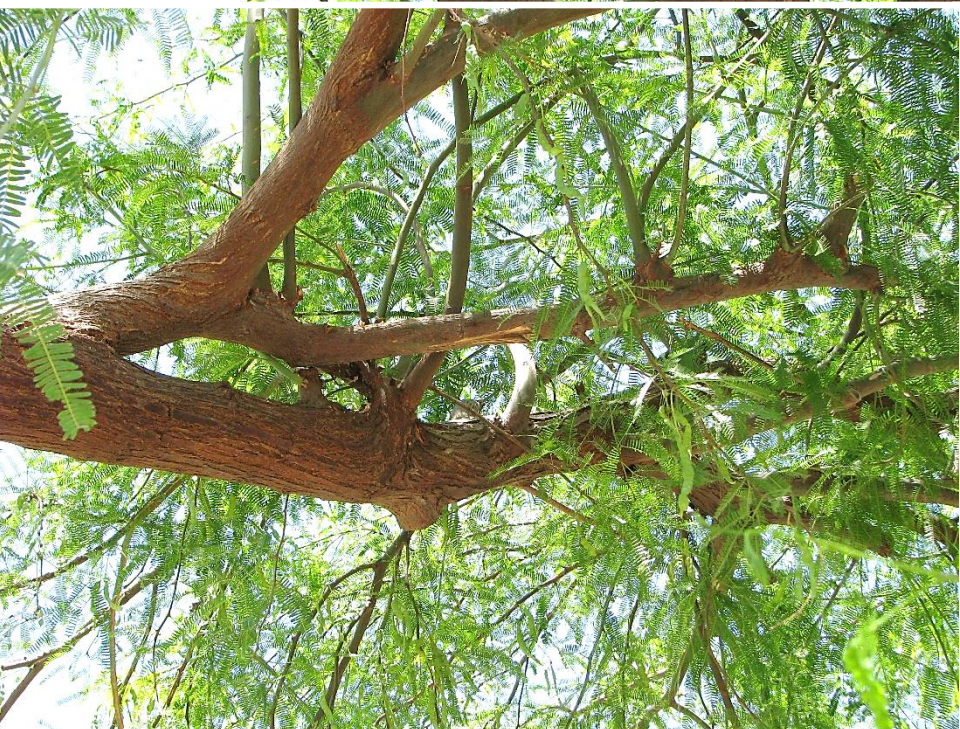


Heading Cuts: NOT Recommended



- Cutting an older branch between nodes (internode) will leave a stub
- Rarely appropriate in established trees

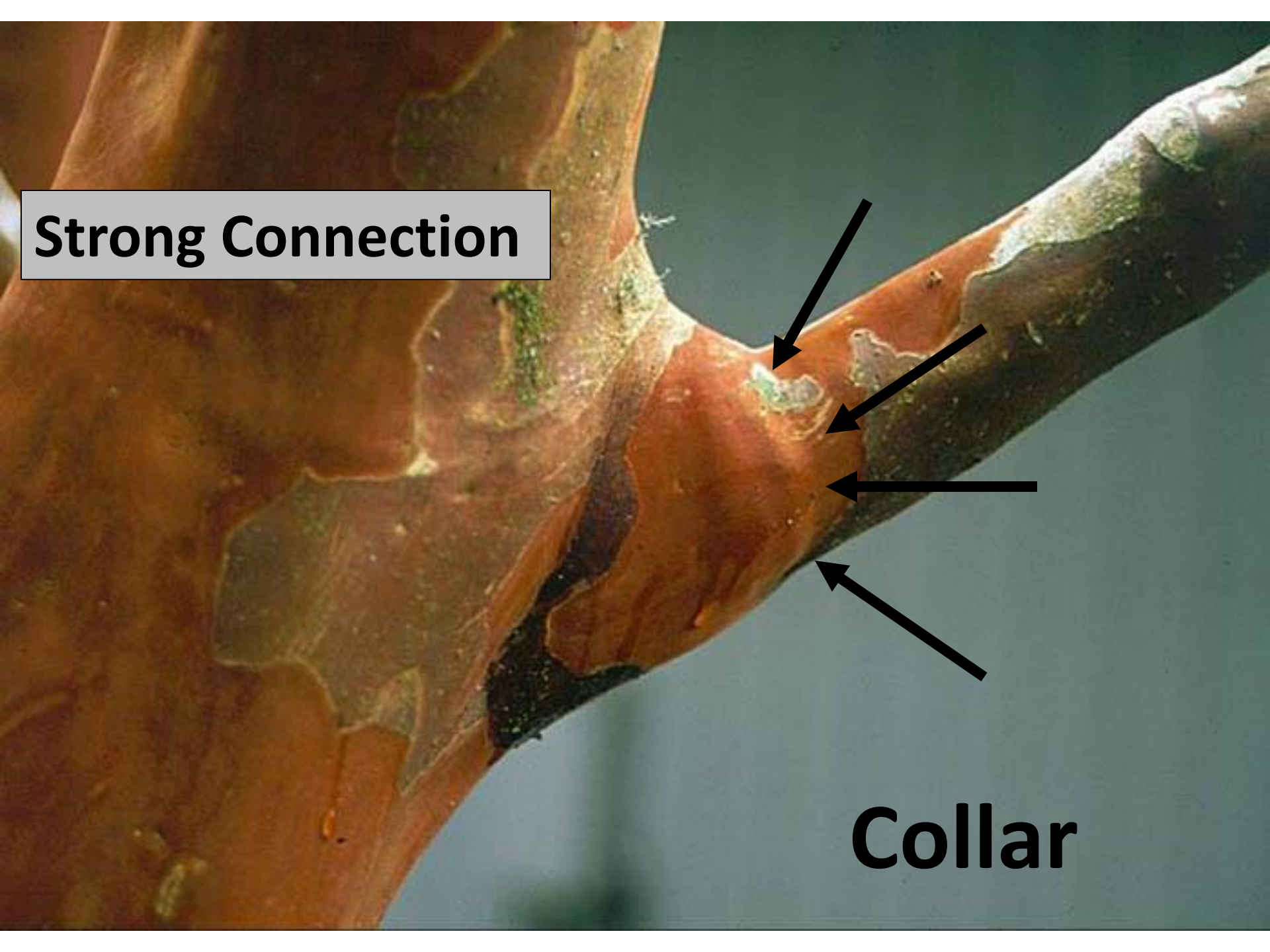






Understanding Branch Structure

Strong Connection

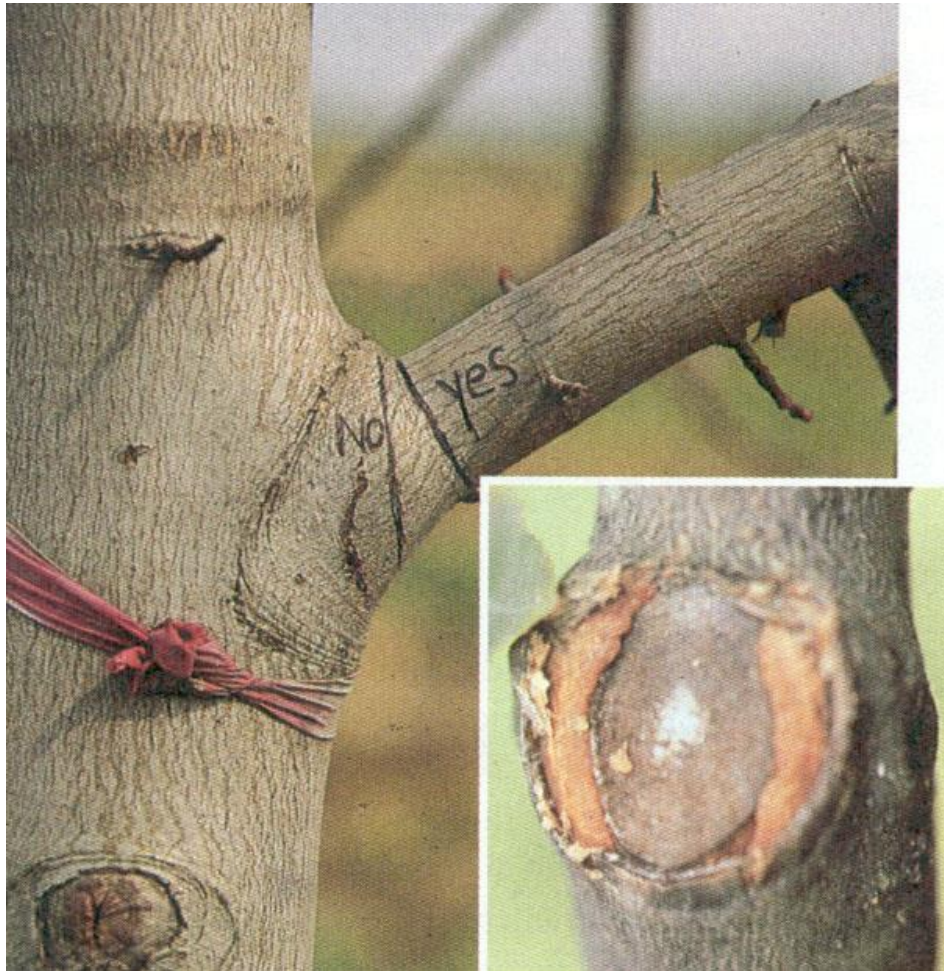


Collar





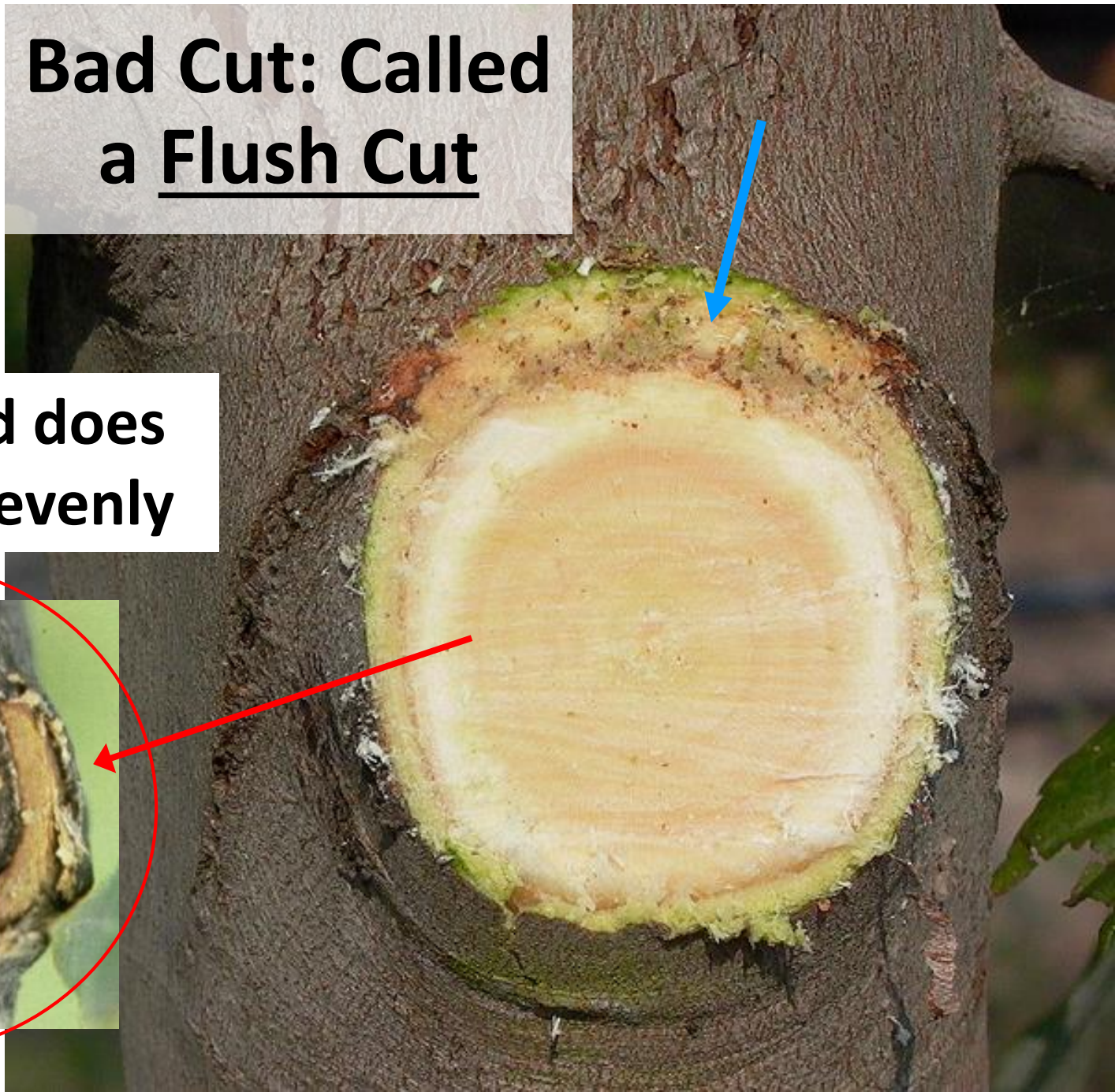
Pruning Limbs



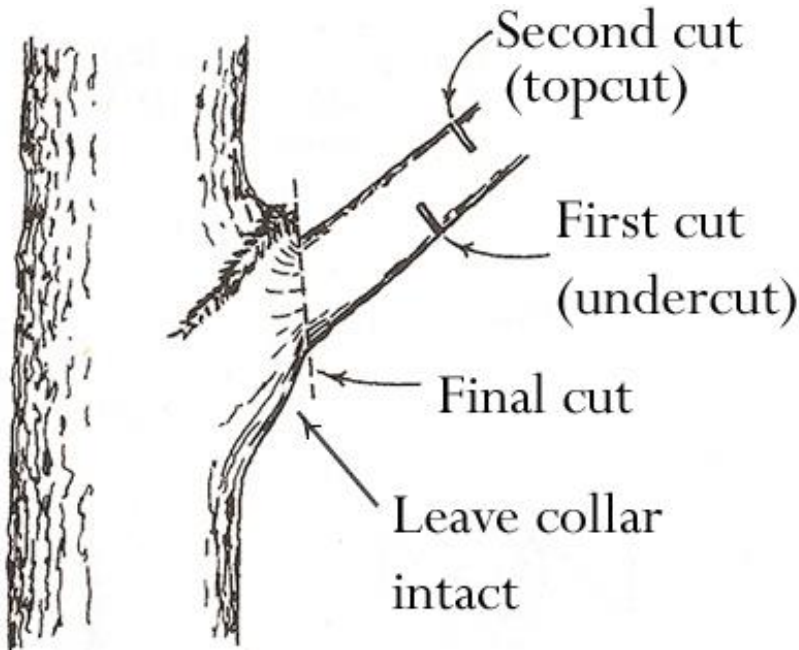
**An Improper Cut
made through
the branch collar
will take 3x
longer to heal**

**Bad Cut: Called
a Flush Cut**

**Wound wood does
not develop evenly**



Make good pruning cuts



Step 1

Make an undercut about 12 inches from the trunk.

Step 2

Make a topcut farther out on the limb.

Step 3

Remove the stub with final cut, being careful not to cut flush against the trunk. Leave the collar intact.





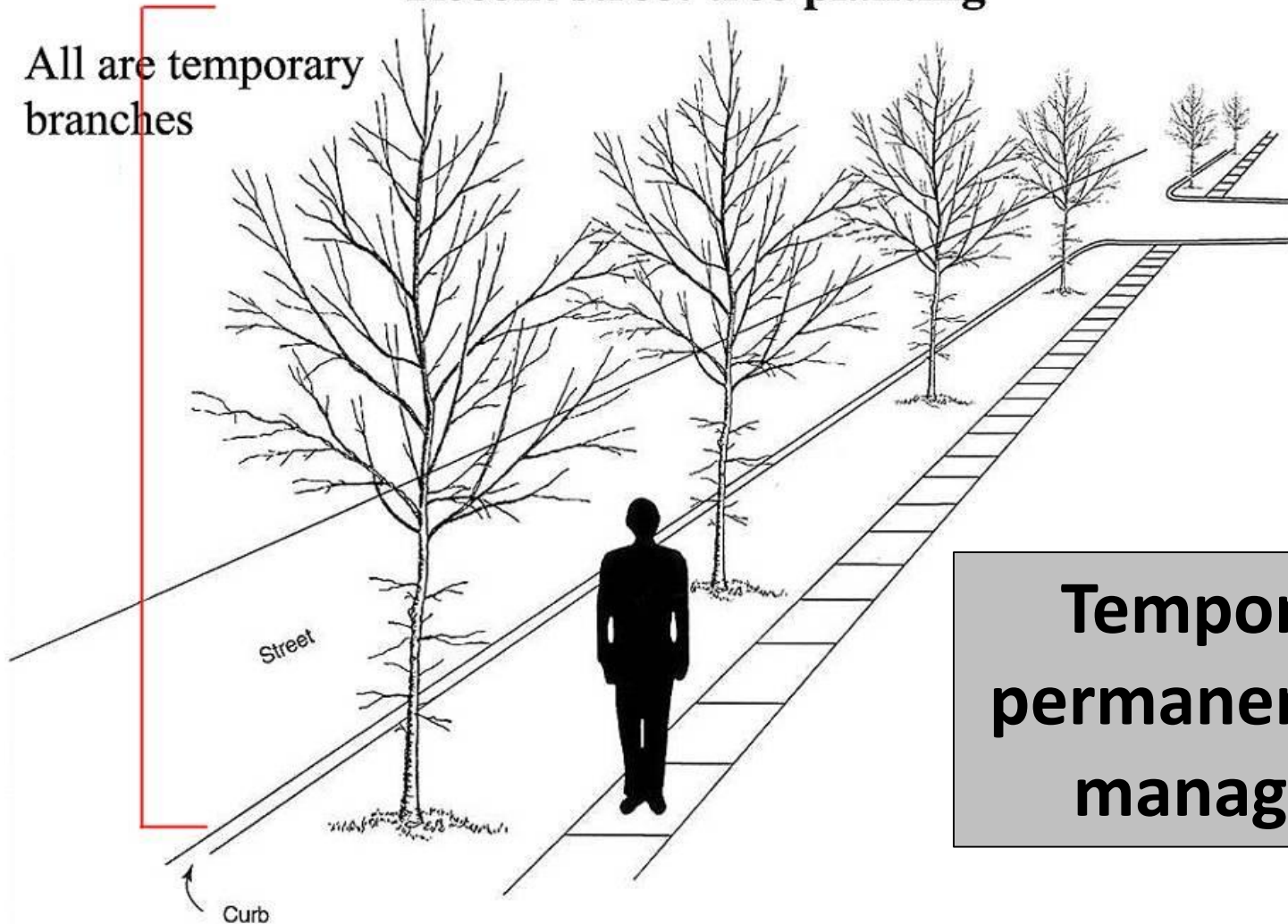




Pruning Plan: First 5 years

Recent street tree planting

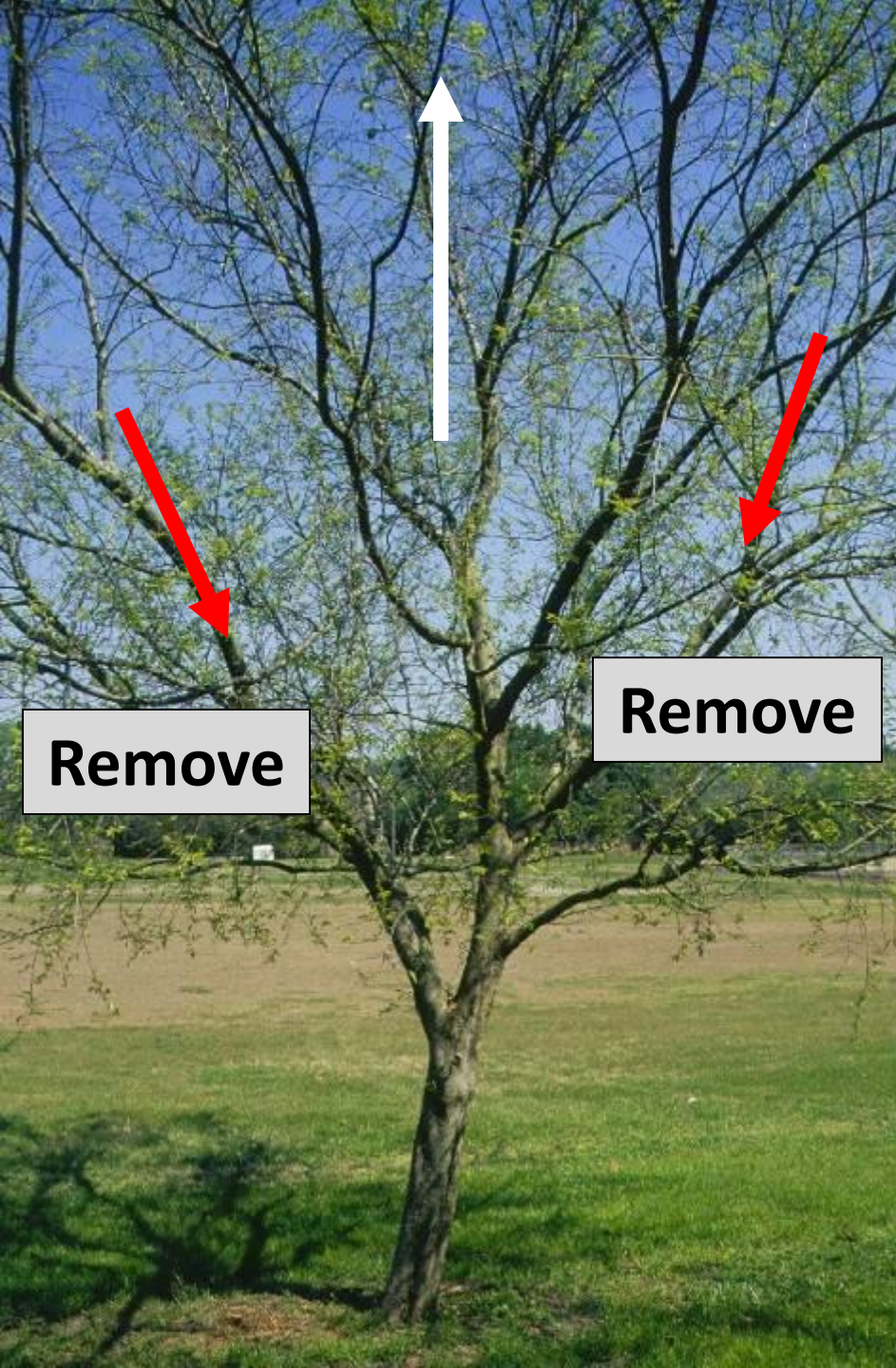
All are temporary
branches



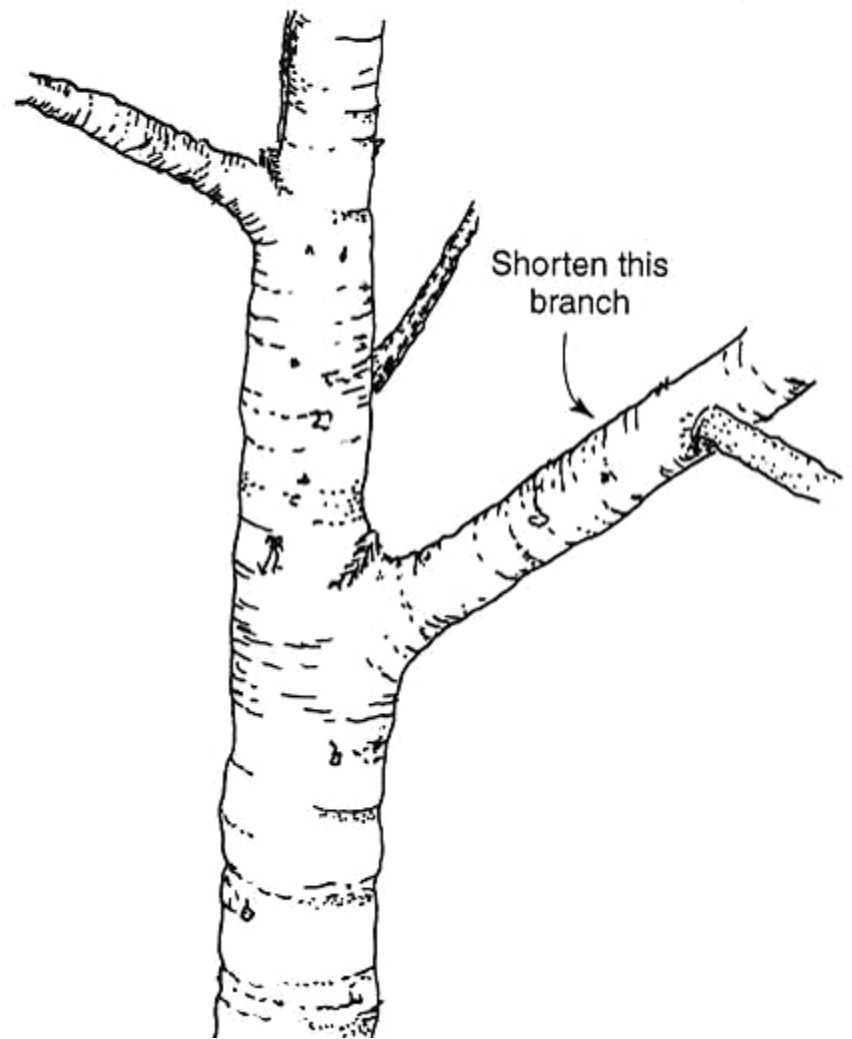
**Temporary vs.
permanent branch
management**

Pruning Plan: First 5 years

- **Most branches are temporary**
- **Do not remove more than 25% of live growth at a pruning visit**
- **Reduce all branches greater than ½ trunk diameter**
- **Reduce and/or remove all branches or stems competing with one selected to be the leader**
- **Reduce and/or remove large, low vigorous branches**
- **Remove broken, cracked or severely damaged branches**



Keep branches less than
half the trunk diameter



Before



Remove

After



Before



After



Debris

Before Pruning



After Pruning





**Comments
-or-
Questions**